



# THE GCA GRAPEVINE

The Monthly Newsletter of the Grapeview Community Association

## MONTH AT A GLANCE

*The Port Commission is meeting in person with a remote option via Zoom – please visit their websites or contact them directly for the information. The Grapeview School Board Meeting is currently scheduled to be held at the School Library or with a Zoom option – please check their website.*

March 1	Crab Feed!
<b>Mar 13</b>	<b>GCA Board Meeting 10:00AM Horton Center</b>
Mar 18	Grapeview <a href="#">Port Commission</a> Meeting 7:00PM
Mar 19	Central Mason <a href="#">Fire Commission</a> Meeting 5:00PM; 122 Franklin St, Shelton
Mar 26	<a href="#">Grapeview School Board</a> Meeting 5:00PM
Mar 28	Men's Breakfast 8:30AM; Burger Claim
Apr 11	Annual Cocktail Party at Fair Harbor Marina (limited seating)

## FROM OUR PRESIDENT'S DESK...

WOW OH WOW What a month February was! Three exciting fun-filled events all in one month... I'm exhausted and hoping for a little better planning (on my part) next year!!!! We started the month with our 1<sup>st</sup> annual **Super Bowl Party**, hosted by Jim Hanson – using our brand new audio-visual equipment at the Horton Center, and hooting and hollering for our favorite team (or at least faking it!). It was really fun and sure to be part of our regular events! Next came the **Valentine's Dessert Auction** – one of our 3 fundraisers for the year. Our volunteer bakers baked their hearts out preparing delicious desserts which contributed over \$2,000 to our fundraising bucket. Our own Annie Bell and her team put on a yummy Potato and Salad Bar spread for all the members to enjoy... no one had to cook that night!! Finally, we ended the month with our beloved **Crab Feed**. About 250 members, their families, and friends enjoyed two nights of delicious crab and all the fixings. The hall looked fantastic, and the smiles and full tummies told the success story by themselves. Read more about these events below.

**I close by saying THANK YOU to the many, many volunteers who worked their fannies off for all these events, and especially close to my heart – those of you who worked the Crab Feed... some of you both nights... I am grateful to you all.**

Most Sincerely,

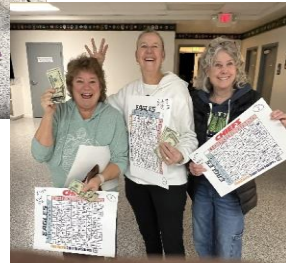
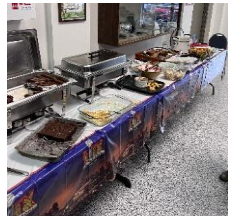
Bonnie Townsley (360-801-5040)





**SUPERBOWL LIX At The Horton Center  
Sundav. Feb 9<sup>th</sup> – HOPE YOU DIDN'T MISS IT!**

What do you do when you don't really give a hoot who wins the Super Bowl, but want to have fun celebrating anyway?? Why you join your GCA Friends at the Horton Center for a fun filled day of sports, snacking, and a little gambling with the Football Pools. We had almost 50 people join us... Jim and Dianne Hanson cooked the hot dogs, the rest of us all brought tailgating favorites to make a mouthwatering table of food we munched on all afternoon. Oh ya... there was a game on too... someone won, but that didn't matter... we just had a lot of fun pretending to care about the game while we enjoyed each other. One note.. Jim Hanson purchased all of the decorations and did a GREAT JOB organizing this really fun day. And our electronics team made the fancy TV work! Check out the fun below...







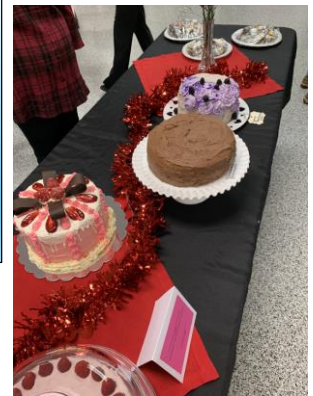
FEBRUARY - WAS A TIME FOR LOVING, LIVING, AND GIVING....



On Friday, February 14<sup>th</sup> we celebrated with our annual **Valentine's Day Dessert Auction Event**. This is one of GCA's three fundraisers to support our Outreach and Scholarship Programs. To make it a little easier on our members, GCA provided the dinner - a yummy potato and salad bar that filled the tummy, but left enough room for dessert! After dinner, we auctioned off all of the desserts that our members donated... showing off the amazing talent we have in our community and how much we like to share it with others. We could not have this event without all the bakers, donating the delightful desserts to auction. Thank you from the bottom of our hearts. This year we brought in over \$2,000 for our fundraiser bucket. Everyone left with a little more in their bellies, and a little less in their wallets!! All for a good cause. Major thanks to Annie Bell, who baked all the potatoes, shopped, and put together the entire dinner and contributed her famous cookies to the auction. And as always, our thanks to the set up and tear down volunteers... we know who you are and we don't take you for granted!



SO MANY GOOD CHOICES!!  
THANK YOU BAKERS!





**2025 CRAB FEED.... ANOTHER ONE FOR THE BOOKS!**



With the days counting down, tickets for both nights sold out, and the price of crab still not known... I was a bit nervous! Didn't need to be because as usual, we overcome any obstacles thrown at us... and this year was no exception. Even though the price of crab went up over 40% this year, our bottom line was the best it's been in three years since I started as Chair. I am so very grateful to the volunteers who gave of their time and talents to put on such a wonderful event this year... I was extremely proud to be a part of it.

Knowing crab was going to be a challenge, the many smart people on our committee put their heads together and said – “let's shake things up a bit... it's time for some changes”... so we did just that! With supreme efforts, **Jim and Dianne Hanson** set forth traveling throughout the county, visiting local businesses, and asking for support for our fundraiser event. Their efforts brought in over \$4,000 of donations to fill the beautiful baskets that **Patty Hansen** and her team put together for both nights. We also received donations from our members, **Mary Baker, Les Okonek, and Cindy & Kelly Granger**, and future members **Gordon & Sheila Daviscount**. We had so many items, we tried something new and asked **Leslie Blaisdell** to use her talents to put together a “Silent Auction”. Together the 14 Raffle Baskets and 12 Silent Auction items brought in over \$5,000 of pure profit. With the cost of crab this year, the raffle and silent auction saved the day! **We had fun, ate delicious crab, and still made over \$6,000 in profit for the night.** I have more gray hair than I'd like... but my heart is filled with gratitude for this wonderful, giving community we live in.

There are just too many people to thank here in this small space, so I must limit it to the “captains” of the teams – but please know I thank EACH volunteer who helped us! **Kitchen Manager - Annie Bell; Serving Captains - Ed White & Jim Hanson; Raffle Baskets – Patty Hansen; Raffle Ticket Sales – Sherry van Dijk; Silent Auction – Leslie Blaisdell; Waste Management – Maarten van Dijk; Parking – Lance Harpel; Crab Pickup/Oversight – Roger Hansen; Room Setup – Ed White; Photography – Leslie Blaisdell & Carla Pomroy; Right Hand Man – Jim Hanson!**

So for next year... what do we do? We'll have to get your feedback on the feasibility of continuing this event given the uncertainty of price, and crab availability. But for now... let's just enjoy the pictures!!







**THE SCHOLARSHIP PROGRAM DEADLINE AROUND THE CORNER!**

March 15, 2025, is the deadline for GCA Scholarship applications, which are completed online. Forms and instructions are on our website, [grapeviewwa.com](http://grapeviewwa.com), and any questions can be directed to Steve Hecht, [steve@longtermfinancial.com](mailto:steve@longtermfinancial.com) or 410-598-0021. Please spread the word among your family and friends with High School seniors. Thank you!

**Thank you! Steve Hecht, Committee Chair**



From Bob Doremus -- A look at Grapeview in the Early Years....

3RD ARTICLE!!!!

Continuing this month, we are excited to continue a new feature of our newsletter. Titled "Grapeview - The Early Years", it takes a look at some of the early history of our community. The idea took shape last summer after a report was discovered in the collection of the Mason County Historical Society titled "History and Geography of Grapeview". It was a project of the Grapeview School, written in 1923. We'll be using information from it and other sources to give you a glimpse into Grapeview's past. We hope that you find it interesting!

With the Mason County Historical Society opening a new exhibit titled "More Than a Building – Schools of Mason County," this seems like the perfect time to reflect on the early years of education in Grapeview. The Grapeview school report of 1923 provides a concise summary of our community's early educational efforts:

*"By the time the effort was launched to build a city here, the practical folks whose heads were yet beneath the clouds saw the need of providing some facilities for education of the rising generation. So it was that the school district was formed. In due time school was opened, in a building on the townsite, that had been erected as a business house. It was located at the top of the first rise north of the bridge across Detroit Cove and faced the street that now forms the Bay shore road. Miss Whittimore was the first teacher.*

*In 1893 the district erected a one room schoolhouse on its own grounds adjoining the town plat at the south and fronting on North Bay. Here the school term was extended from three months to six or seven months each year. The district was then but a strip of shore lands several miles long but having little depth, so its valuation was inadequate to its needs. In 1911 a consolidation of districts was effected absorbing the territory from Defiance Cove to across McLane's Cove, and extending from North Bay west to across Mason Lake.*

*A schoolhouse was then built at McLane's Cove and a school opened there. Pupils from Mason Lake were transported to that school. In 1914 a two-school building on a concrete basement with modern heating plant was built on enlarged on the Detroit side. To make possible the grading of the school, the pupils from distant the district were transported to this new as the central school. This made possible carrying of local schoolwork to the higher up to and including the 10th. This proved of advantage to the pupils that it has been continued in spite of poor road conditions. school as now conducted is a source of pride to its patrons."*



Courtesy of Mason County Historical Museum

The Old McLane Cove School after conversion to a church camp

room a grounds better parts of school the grades such

The great

Among the many stories of early schooling in Grapeview, one family tale stands out. My father, Bryan Rauschert, often recalled how his brother Ted had to row across McLane's Cove each day to get to and from school—a daunting task for two young boys. For years, this story painted a picture of determination and hardship. However, while reading one of Bryan's journals, I recently discovered a key detail that had been left out: the school district had actually hired a man to ferry the children across the cove! Sometimes, omitting a few facts can make a story far more dramatic.

wife's he and

**MEMBERSHIP NEWS - IMPORTANT!!!!**

The new GCA Directories have been mailed. If you didn't get yours, contact Daniel Peel ([daniel.peel3@gmail.com](mailto:daniel.peel3@gmail.com)).

Dues are still coming in and many of you have renewed your membership. If you haven't and want to pay by check, just click on the [2025 Membership Form](#). Complete the form, print it and mail it along with your payment to:

**Grapeview Community Association**  
**P. O. Box 355**  
**Grapeview, WA 98546**

You can do it by check or **you can [pay your renewal online with your credit card](#), and** let us know of any changes to the directory information. **THERE IS NO FEE to pay online.** There IS an option to donate to Zeffy (the company who makes this function possible). **[When the donation amount comes up, click on "OTHER" and put AN OPTIONAL DONATION AMOUNT in that space.](#)** Simply [click here](#) right now to make that payment!

Thank you for your continued support and participation.

Dan Peel. Membership Co-Chair

**Bookmark the GCA Website and GCA Facebook!!**

Keep up to date with the latest news and events from the GCA and the greater Grapeview Community by visiting and bookmarking the [GCA Website](#) and the [GCA Facebook](#) page. Both the website and Facebook page are updated throughout the month as news and information are made available regarding both the GCA and our community.